

Thalea⁾⁾⁾

Synergies based on innovative
procurement

Univ.-Prof. Gernot Marx, MD, FRCA

Head of Department of Intensive Care and Intermediate Care,
University Hospital RWTH Aachen

www.thalea-pcp.eu

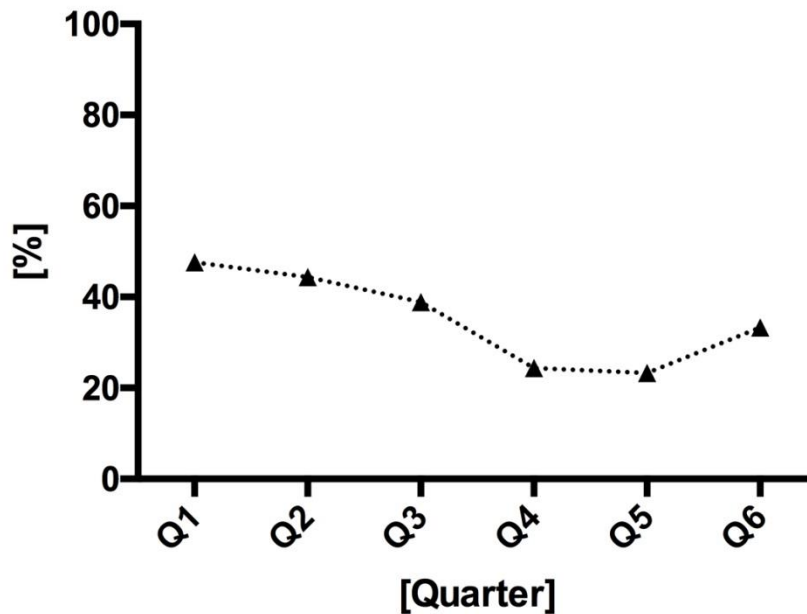
Synergies in Innovation

- Tele-Intensive Care Medicine (TIM)
 - Funding by Ministry of Health North Rhine-Westphalia
 - Co-funded by EU EFRE- Funds
- TIM II Funding by Public insurers
- THALEA (PCP)
 - European Funding in FP7
- Innovation-Funds Project TELnet@NRW
- THALEA II (PPI)
 - European Funding in H2020



Improved Survival

- 1168 ICU-patients
- 4569 tele-rounds
- improved survival
- N=196 episodes of severe sepsis and septic shock



•▲• Mortality



Why THALEA?

Tele-Intensive care saves lives!

THALEA's primary goal is:

- Cross-border Interoperability
- Create a technologically advanced expert system
- Support regional intensive care units

This will lead to:

- Earlier detection of deterioration, earlier intervention
- Big Data analysis
- Real outcome benefit for patients
- Facilitating European ICU-registry

Pre-series model NewCompliance (NL)

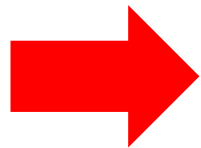


Digital Summit 2017



THALEA - From PCP to PPI

- Submission of PPI proposal THALEA II in April 2015
- Granting in August 2015
- Project start of THALEA II in June 2016
- Call for Tender in Spring 2019



THALEA:

First project in Germany, which received funding for both procuring methods (PCP and PPI)

Who is behind THALEA?

■ THALEA consortium:



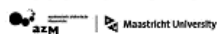
University Hospital RWTH
Aachen (GER)

Ministerium für Innovation,
Wissenschaft und Forschung
des Landes Nordrhein-Westfalen



Ministry of Innovation,
Science and research of North
Rhine-Westphalia (GER)

Maastricht UMC+



Maastricht University
Medical Center (NL)

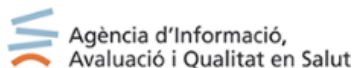


NL Agency
Ministry of Economic Affairs

Ministry of Economic Affairs
(NL)



Parc Taulí Sabadell
University Hospital (ES)



L'Agència de Qualitat i Avaluació
Sanitàries de Catalunya (ES)



East Limburg Hospital (BE)



Oulu University Hospital
(FIN)

■ THALEA II consortium:



University Hospital RWTH
Aachen (GER)



Federal Procurement Agency
(BBG), "Bundesbeschaffung
GmbH (AUS)

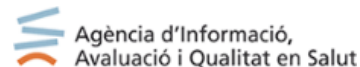
Maastricht UMC+



Maastricht University
Medical Center (NL)



Parc Taulí Sabadell
University Hospital (ES)



L'Agència de Qualitat i Avaluació
Sanitàries de Catalunya (ES)



PCP and PPI - Advantages

- THALEA-PCP - Development of a tailored, innovative solution
 - Identified need is answered by cooperation of industry and research
 - THALEA II-PPI - Procurement of a market-ready solution
 - A product will be bought and evaluated by UKA (consortium leader) + partners as early adopters
 - Price savings through EU-Contribution and positive effects of buyers group
- PPI-projects support leading role and increase competition in Europe



- Recommendations for PPI based on PCP experiences:
 - Focus on coordination is the key
 - Roles and responsibilities defined and followed
 - Close collaboration between partners is essential
 - Prioritization of THALEA work in institutions
 - Project timeline
 - Enough time for medical certification and testing work
 - Highlight interoperability targets to companies
 - Technical challenge related to interoperability needs to be addressed

Conclusion

- Digitization in medicine offers substantial benefits for EU-citizens and patients
- Innovative solutions can help to overcome demographic challenge
- PCP and PPI provide enormous economic leverage
- PCP and PPI shortens time to market and citizens
- Synergies between NRW and EU foster innovative solutions